



# KOAMTAC Fundamentals

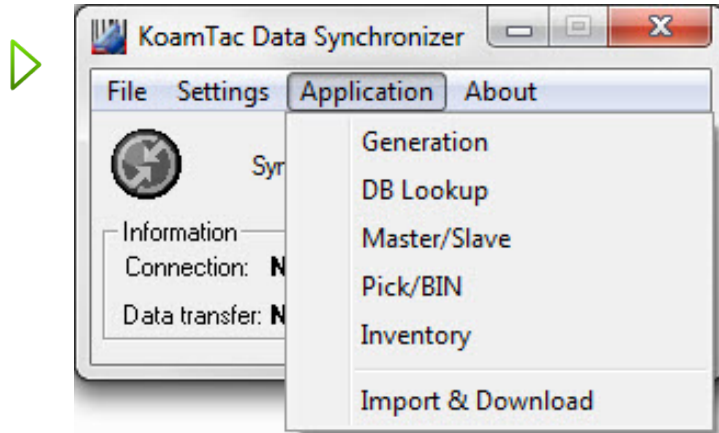
Using the KTSync Application Generator

# Creating an Application

## Using the KTSync Application Generator

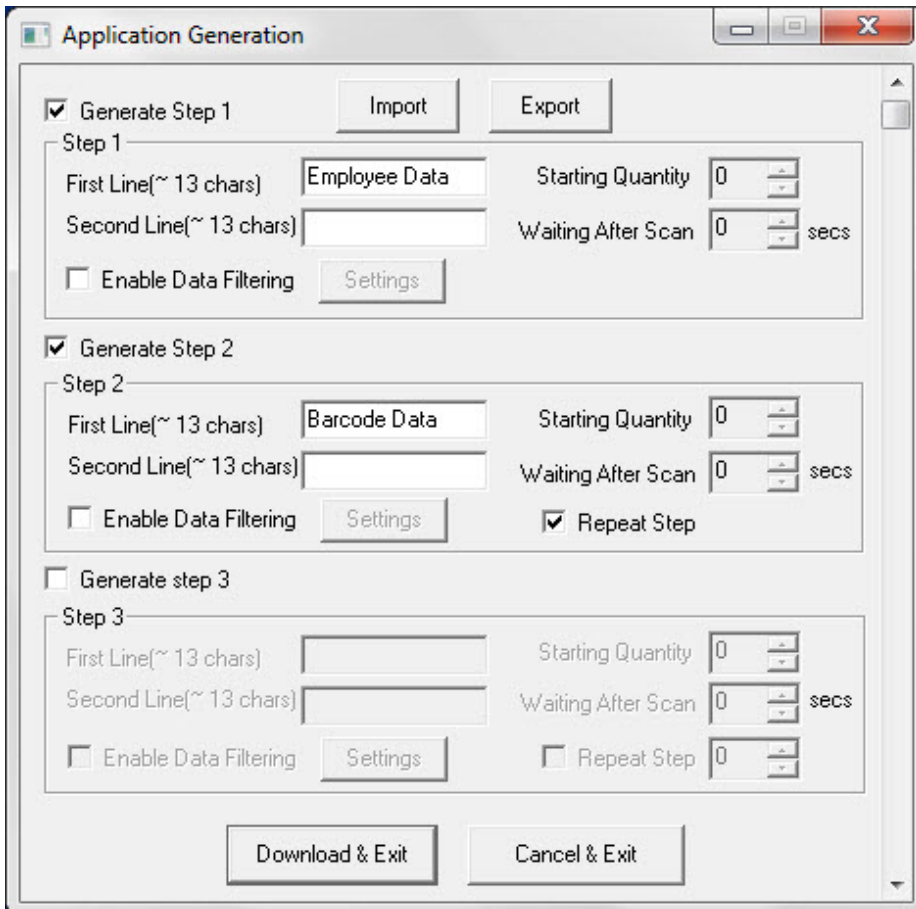
Be sure your KDC is connected to your PC through USB. Open the KoamTac Data Synchronizer.

Select Application > Generation.



Generate each step by checking off the box and entering in desired data.

*Example:*  
Step 1: Employee ID  
Step 2: Barcode data

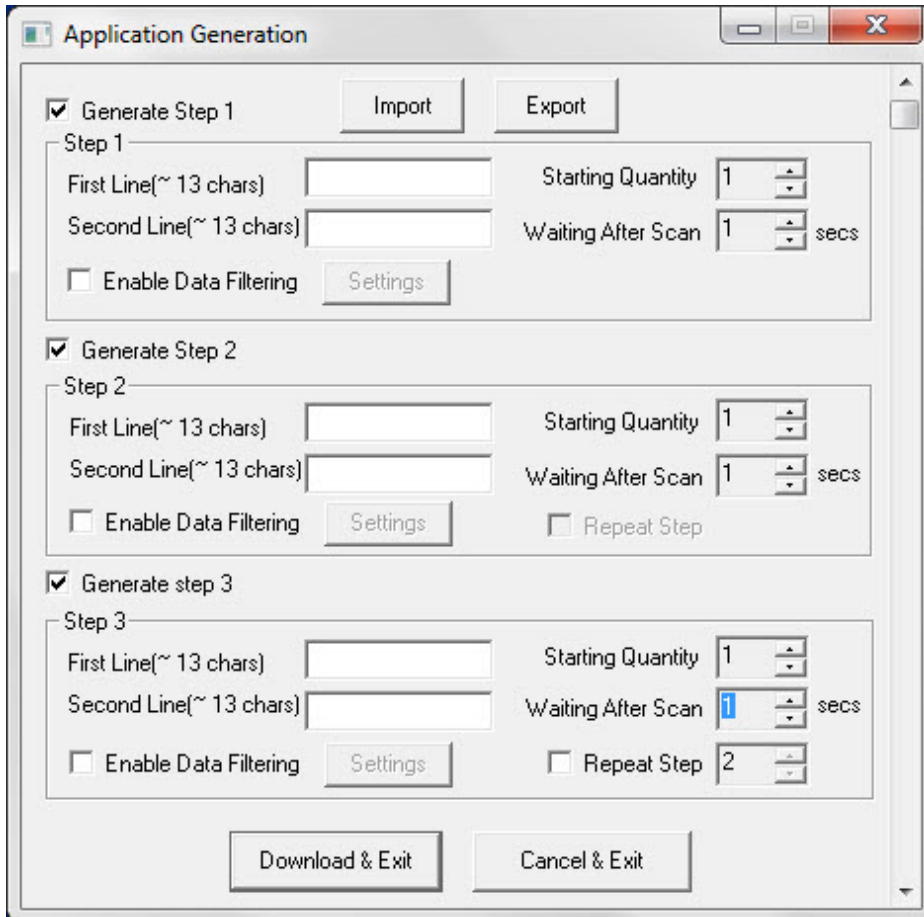


If you would like to repeat the last step continually, check off the Repeat Step checkbox.

# Creating an Application

## Using the KTSync Application Generator

A starting quantity will be added each time a step is made. We suggest adding a delay following scanning. This modifies the data that is transmitted with each selected step.



The screenshot shows the 'Application Generation' dialog box with the following settings:

- Generate Step 1
  - Step 1
    - First Line(~ 13 chars): [ ]
    - Second Line(~ 13 chars): [ ]
    - Starting Quantity: 1
    - Waiting After Scan: 1 secs
    - Enable Data Filtering
    - Settings: [ ]
- Generate Step 2
  - Step 2
    - First Line(~ 13 chars): [ ]
    - Second Line(~ 13 chars): [ ]
    - Starting Quantity: 1
    - Waiting After Scan: 1 secs
    - Enable Data Filtering
    - Settings: [ ]
    - Repeat Step
- Generate step 3
  - Step 3
    - First Line(~ 13 chars): [ ]
    - Second Line(~ 13 chars): [ ]
    - Starting Quantity: 1
    - Waiting After Scan: 1 secs
    - Enable Data Filtering
    - Settings: [ ]
    - Repeat Step: 2

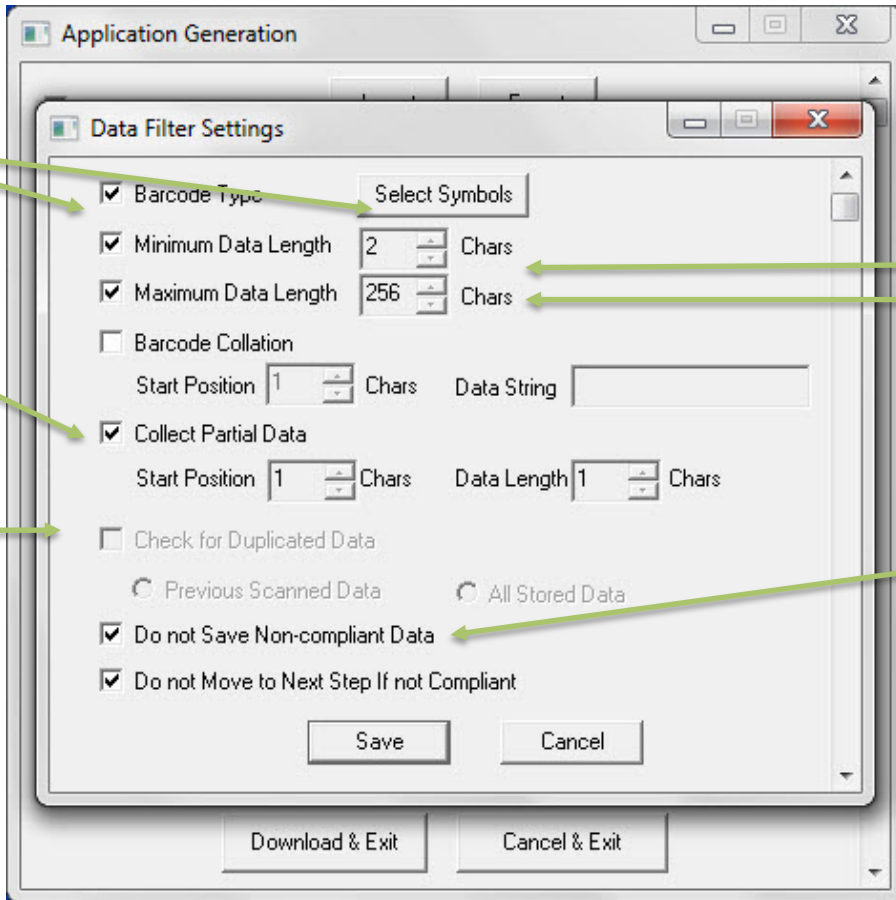
Buttons: Import, Export, Download & Exit, Cancel & Exit



# Creating an Application

## Using the KTSync Application Generator

We suggest checking the data filters below and eliminate any possible errors. To adjust the settings, check off the generation steps. Upon completion, click Save and then Download & Exit. The application will be added to your KDC device.



*This setting allows you to select the barcode symbology that can be scanned.*

*Use the Collect Partial Data function if you would like to exclude a part of the barcode data.*

*Check the box to verify Duplicated Data and eliminate overlap.*

*We suggest modifying the Minimum and Maximum length of the barcode to prevent scanning issues.*

*Check the box to ignore non-compliant data so all stored barcodes are valid.*